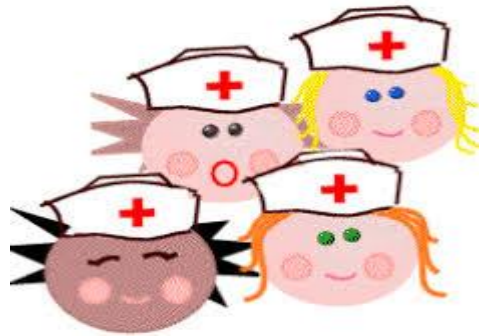


Community Health Nurses in Multidisciplinary Centres (MDCs)



Introduction to MDC's

- We are specialised nurses who work with individuals and their families affected by sexual assault/family violence and support them with any health issues
- We are a small service with three nurses located Dandenong/Seaford (Renee, Natasha & waiting to recruit 3rd nurse)
- All with various and extensive levels of nursing experience
- We are situated within Multi-Disciplinary centres at Seaford/Dandenong
- We work alongside *SOCIT* (Sexual offences and Child Abuse investigation team), *VIFM* (Victorian institute of Forensic medicine), *Child protection*, *VACCA* (Victorian Aboriginal Child and Community Agency), Family violence response, and *SECASA* (South Eastern Centre Against Sexual Assault)

Referral criteria

Individuals/family who are affected or victim of family violence and/or sexual assault

A large green arrow pointing downwards, indicating a flow from the first criterion to the second.

We work with individuals aged 0-100 years

A large green arrow pointing downwards, indicating a flow from the second criterion to the third.

South east Victoria- MDC's are located across state

What does this look like?

- ▶ Engage client & introduce to service
- ▶ Comprehensive Health Assessment
- ▶ Create health care goals with client
- ▶ Prioritise and meet health care needs- Sometimes outreach support
- ▶ Linkage/access to services for longer term health management
- ▶ Ideally discharge once goals achieved (approx. 2-4 months on average)
- ▶ Also offer short time crisis follow post assault



Primary health- GP, dental, MCHN, dietician, physiotherapy, OT, counsellor, appointment supports



Access to terminations /STI testing/contraception



Links to mental health services e.g. psychology, psychiatry



Support people with specialist appointments/ through specialist treatments in hospital

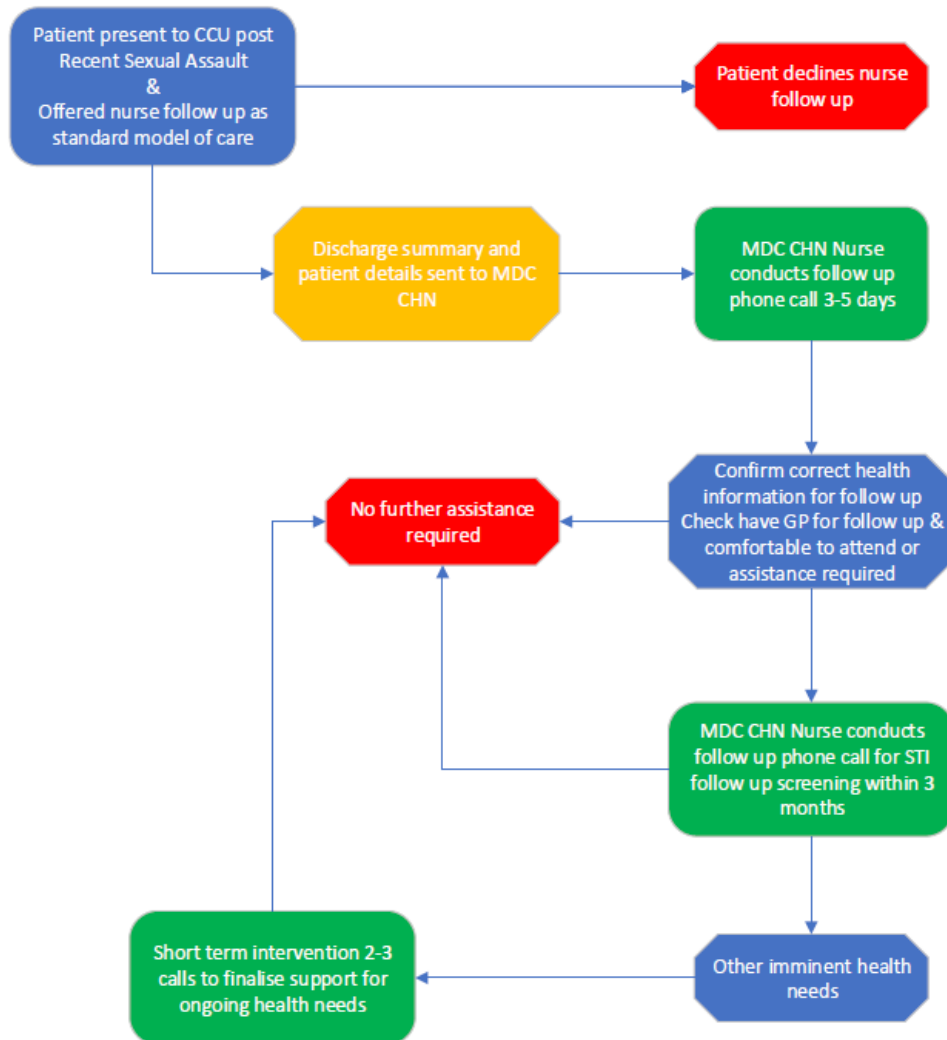


Linkages to support groups and community services

MDC CHN Case study

Recent Sexual Assault (RSA)

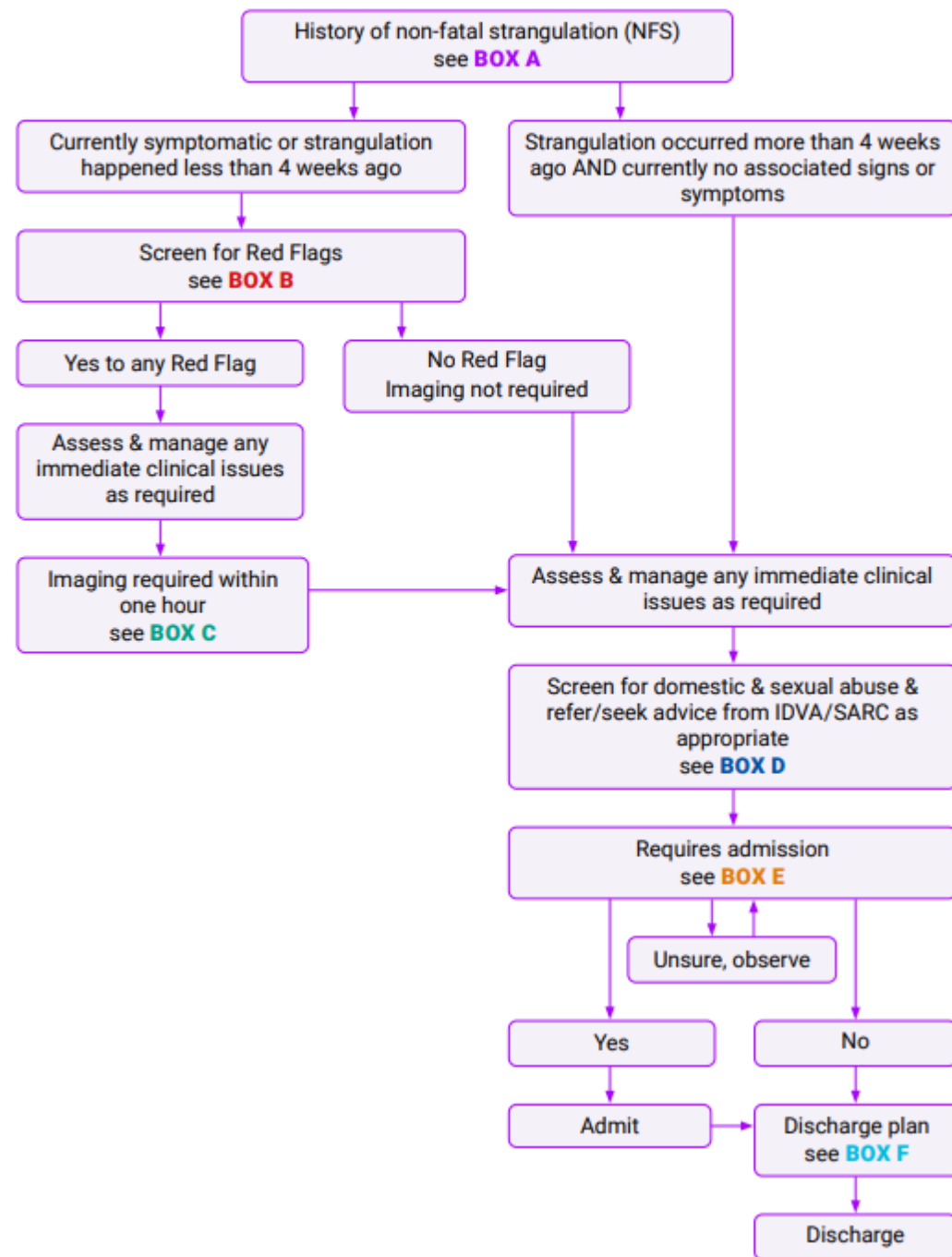
MDC CHN Model of Care for Follow up Post Recent Sexual Assault Presentation to Crisis Response Unit



The background features a series of overlapping, semi-transparent green geometric shapes, primarily triangles and polygons, that create a dynamic, layered effect. The colors range from a light, pale green to a deep, forest green. The shapes are positioned on the right side of the frame, extending towards the center, while the left side remains a solid white background.

Case Study CRU CHN support

Non-Fatal Strangulation Guidelines



FAQs

- ▶ What do you need to know in a referral form?
- ▶ Are you mental health nurses?
- ▶ Do you refer clients to other services like psychiatrists?
- ▶ What if I don't need to refer a client but have health related questions?

Any other questions?

How to contact an MDC Nurse

Renee (Seaford) 0466 304 417

Natasha (Dandenong MDC) 0466 304 419

chndandenongMDC@monashhealth.org

chnseafordMDC@monashhealth.org

How to refer to an MDC Nurse?

